



RENTAL LED

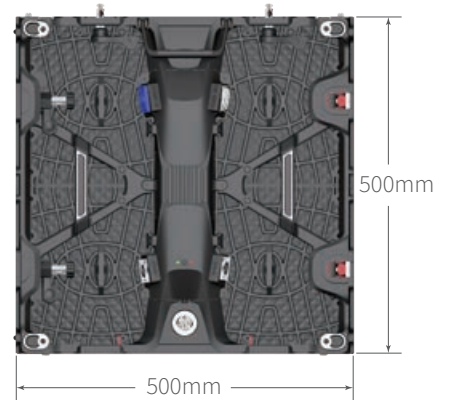
RE Series



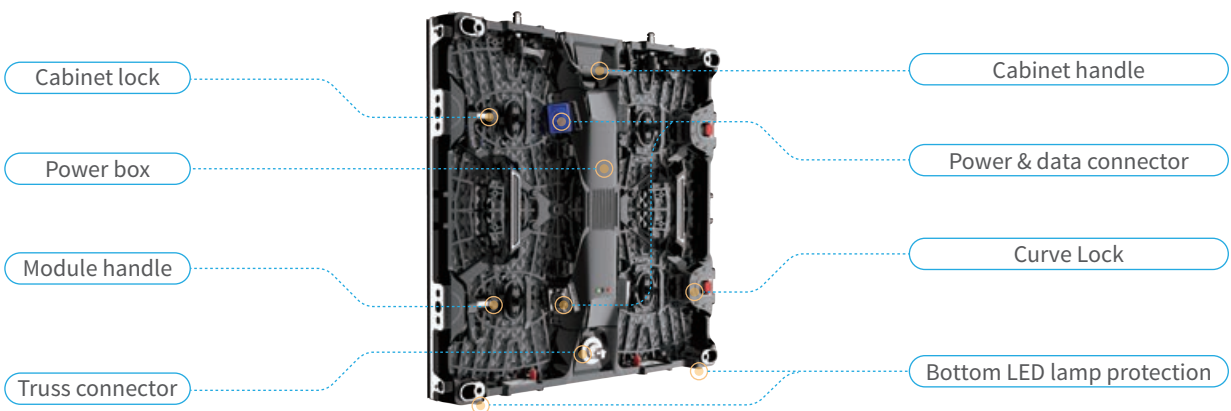


Key Features

- Available Pixel Pitch: indoor 1.9, 2.6, 2.9, 3.9mm , outdoor 3.9, 4.8mm
- Cabinet Size: 500mm×500mm×75mm
- Brightness: indoor/outdoor 700/5000 units
- Viewing Angle: horizontal 160°, vertical 120°
- Refresh Rate: 3840Hz
- Maintenance Mode: Front/rear maintenance
- Product Weight: 8kg
- Novastar Control System



Robust Structure



Installation Types



Hanging Installation



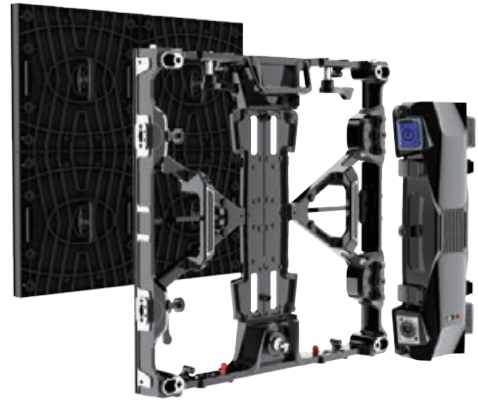
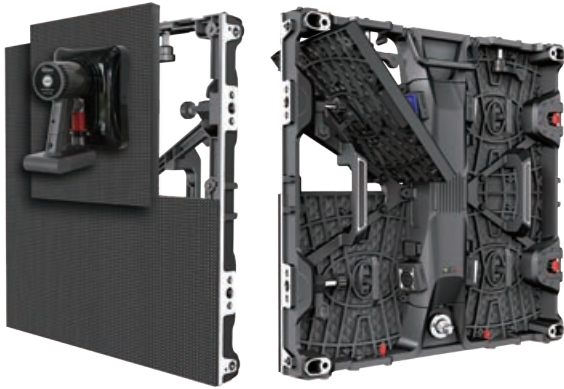
Stacking Installation



Fast Maintenance

Front & rear maintenance of module and power box

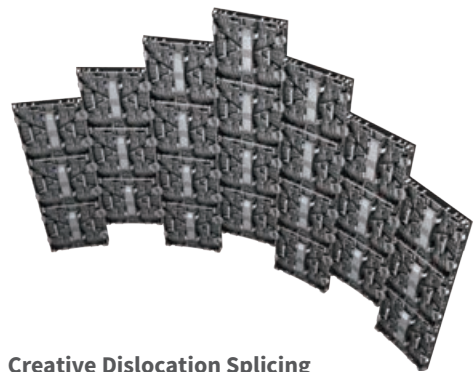
One man installation: Panel weight less than 8kg



+5° -5° +10° -10° Curve Lock

Knob-type curve lock for quick and precise positioning.

Easily achieve inner and outer curve configuration.



Creative Dislocation Splicing



Environmental Adaption



Outdoor IP65 Ingress Protection



Specifications

Model	MW7819-RI	MW7826-RI	MW7829-RI	MW7839-RI	MW7839-RO	MW7848-RO
Pixel Pitch	1.9mm	2.6mm	2.9mm	3.9mm	3.9mm	4.8mm
LED Type	SMD	SMD	SMD	SMD	SMD	SMD
Cabinet Size(mm)	500*500*75	500*500*75	500*500*75	500*500*75	500*500*75	500*500*75
Cabinet Resolution	256*256	192*192	168*168	128*128	128*128	104*104
Cabinet Weight(kg/pcs)	8	8	8	8	8	8
Brightness(nits)	600	700	700	700	5000	5000
Cabinet Material	Die-cast aluminum	Die-cast aluminum	Die-cast aluminum	Die-cast aluminum	Die-cast aluminum	Die-cast aluminum
Viewing Angle	160°/120°	160°/120°	160°/120°	160°/120°	160°/120°	160°/120°
Contrast	3000:1	3000:1	3000:1	3000:1	5000:1	5000:1
Refresh Rate	3840Hz	3840Hz	3840Hz	3840Hz	3840Hz	3840Hz
Gray Scale Processing	14bit	14bit	14bit	14bit	14bit	14bit
Input Voltage	AC 100 to 240V, 50/60Hz	AC 100 to 240V, 50/60Hz	AC 100 to 240V, 50/60Hz	AC 100 to 240V, 50/60Hz	AC 100 to 240V, 50/60Hz	AC 100 to 240V, 50/60Hz
Input Power(Avg)	150	180	180	180	280	280
Input Power(Max)	450	520	520	520	830	830
Maintenance Mode	Front/rear maintenance	Front/rear maintenance	Front/rear maintenance	Front/rear maintenance	Front/rear maintenance	Front/rear maintenance
Ingress Protection	Front/rear IP30/IP30	Front/rear IP30/IP30	Front/rear IP30/IP30	Front/rear IP30/IP30	Front/rear IP65/IP54	Front/rear IP65/IP54

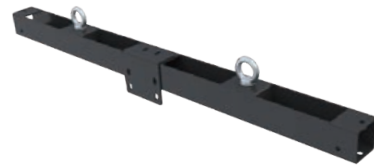
Notice: MW7839-RO can't support -10°curve splicing.



Accessories



LED Processor



Hanging Bar



Flight Case



Stacking